

Treatment Process

After a full consultation, a comprehensive treatment program can be developed to match your needs and requirements.

Depending upon which treatments you choose the basic procedure will stay the same: the area to be treated will be prepared and the applicator head will be stepped across the skin to ensure complete coverage.

Treatments are quick and you can return to your regular schedule immediately after.

Female Facial Hair

• Before • After



Is there anything I need to do prior to, or after, treatment?

It is advisable to stay out of the sun and away from tanning beds prior to any treatment to ensure that your skin is as close as possible to its natural color.

You must ensure that all cosmetics are removed from the treatment area with a good cleanser, and then allow the skin to settle.

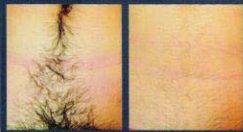
As the skin may be slightly more sensitive post-treatment exposure to the sun should be avoided and the use of skin products developed for sensitive skin is recommended.

When will I see results?

Dependent upon the treatment performed and the area treated, results will be noticed after a series of treatments over a period of months.

This is due to the body's skin renewal cycles and natural hair growth.

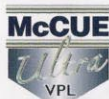
• For more information, contact us:



• Before • After
Female Bikini Body Hair

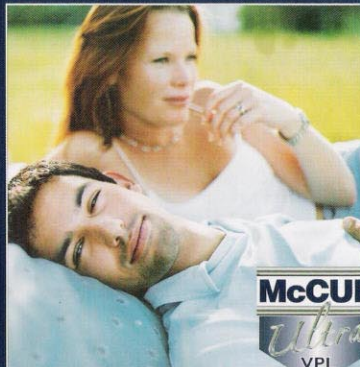
SEDONA
HOLISTIC MEDICAL CENTRE
5481 SOUTHWESTERN BLVD.
HAMBURG, NY 14075
Ph- 646-9075
F- 646-9912
E-Mail- WWW.Sedonaholistic.Com

McCue Corporation Inc.
140 Street Of Dreams
Belton, MO 64012



Phone: 816-348-8901 Fax: 816-348-8902
Email: sales@mccueplc.com Web: www.mccueplc.com

The Hair Removal & Skin Rejuvenation System



The McCue *Ultra* VPL™ is the most advanced hair removal and skin rejuvenation product available. Utilizing State-of-the-art variable pulsed light VPL™ technology, the Ultra provides the optimal parameters for each individual, ensuring safe, fast and effective treatment therapy.

What makes this system special?

Traditionally, most cosmetic procedures have been associated with lasers. As technology has progressed, research has shown that intense pulsed light and in particular variable pulsed light are regularly producing better results than the laser units originally available. Pulsed light units are non-laser, emitting light across a broad range of wavelengths that are preferentially absorbed by the appropriate structure in the skin.

The McCue *Ultra* VPL™ is designed so that each shot of light comprises a sequence of rapid shorter pulses. These variable pulses ensure more controlled absorption by the appropriate structures while minimizing heating of the surrounding skin. This means that a greater range of skin and hair types can be safely and effectively treated.

How does it work?

Depending upon the treatment being carried out, light emitted from the Ultra is preferentially absorbed by the specific structure in the skin.

For hair removal, the melanin in the hair absorbs this light and is heated to a temperature that permanently inhibits the hairs' growth. For skin rejuvenation, various structures absorb the light and repair the damage caused by the sun and ageing.

What conditions can be treated?

The Ultra has been designed to provide both safe and effective hair removal and skin rejuvenation treatments.

Hair Removal:

Unwanted hair can be removed from all parts of the body.

These include: legs, chin, upper lip, bikini line, underarm, back and chest.

Skin Rejuvenation:

Many skin conditions caused by ageing and sun damage can be successfully treated using the yellow light produced by the Ultra.

These include: Unsightly veins, rosacea, sun damage, age spots, freckles, pigment changes, fine lines and wrinkles.

Who can be treated?

The versatility of the *Ultra* provides a safe and effective treatment for most hair and skin types, but a consultation will provide you with answers and a complete treatment program that will include any relevant precautionary advice. As the treatments have little or no visible side effects, effective procedures can be performed quickly with no downtime.

Male Back Hair

• Before • After



• Before • After
Female Chin Hair

